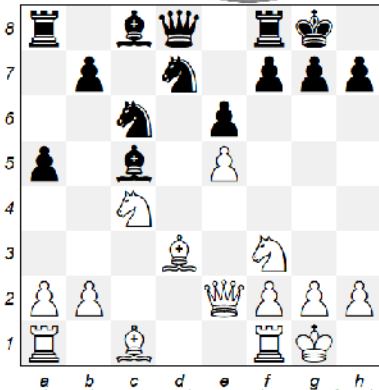
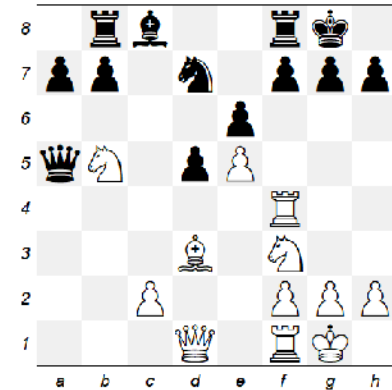




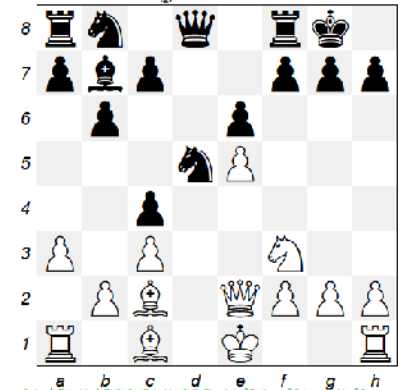
Klassisches Läuferopfer



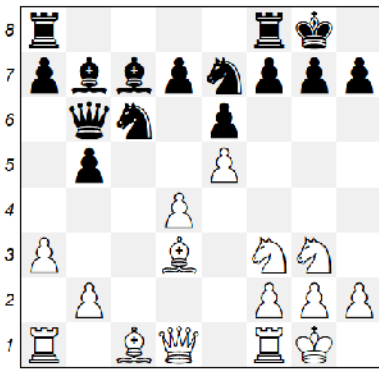
1.Lxh7+ Kxh7 2.Sg5+ Kg6 (2...Kg8 3.Dh5 Tc8 4.Dxf7+ Kh8 5.Dh5+ Kg8 6.Dh7+ Kf8 7.Dh8+ Ke7 8.Dxg7#) 3.De4+ f5 4.exf6+e.p. Kxf6 5.Dxe6#



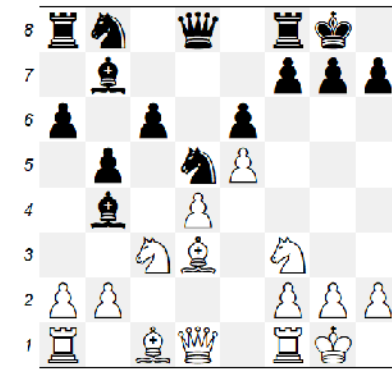
1.Lxh7+ Kxh7 2.Sg5+ Kg6 (2...Kh6 3.Th4+ Kg6 4.Dh5+ Kf5 5.Sh7#) 3.Dd3+ f5 4.exf6+e.p. Kxg5 5.Dg3+ Kh6 6.Th4#



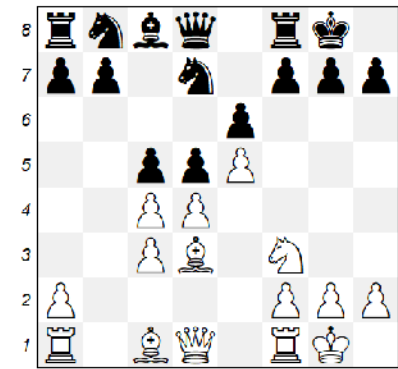
1.Lxh7+ Kxh7 2.Sg5+ Kg6 3.De4+ f5 4.exf6+e.p. Kxf6 5.Dxe6#



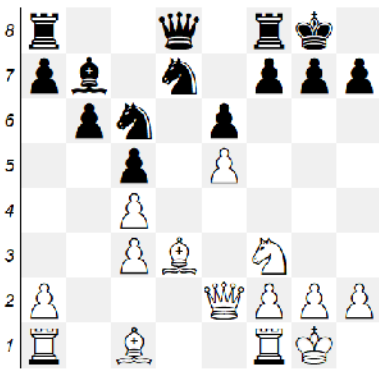
1.Lxh7+ Kxh7 2.Sg5+ Kg8 3.Dh5 Tc8 4.Dxf7+ Kf8 5.Sh5 Tg8 (5...Sf5 6.Dg6 Kg8 7.Sf6+ Kf8 8.Df7#) 6.Sf6 nebst #



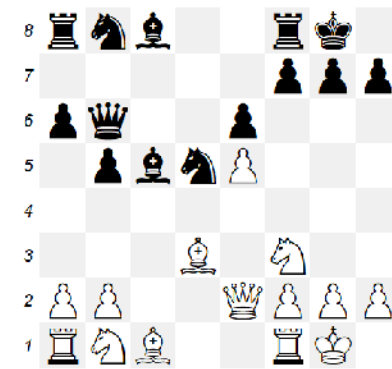
1.Lxh7+ Kxh7 2.Sg5+ Kg6 3.h4 Th8 (3...Sxc3 4.Dd3+ f5 5.h5+ Kxh5 6.Dh3+ Kg6 7.Dh7#) 4.Dd3+ f5 5.exf6+e.p. Kxf6 6.Df3+ Ke7 7.Df7+ Kd6 8.Sce4#



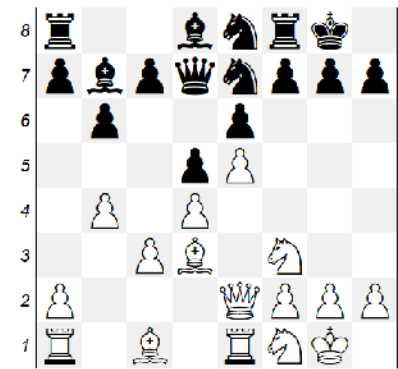
1.Lxh7+ Kxh7 2.Sg5+ Kg6 3.h4 Th8 4.Dd3+ f5 5.exf6+e.p. Kxf6 6.Df3+ Ke7 7.Df7+ Kd6 8.Dxe6+ Kc7 9.Lf4+ Se5 10.Lxe5+ Dd6 11.Dxd6# #



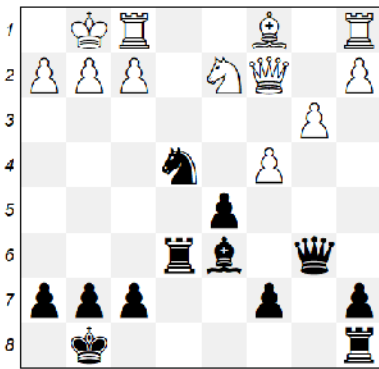
1.Lxh7+ Kxh7 2.Sg5+ Kg6 3.De4+ f5 4.exf6+e.p. Kxf6 5.Dxe6#



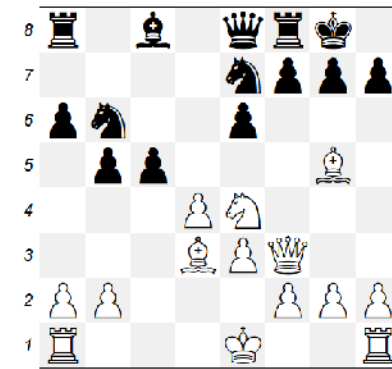
1.Lxh7+ Kxh7 2.Sg5+ Kg6 3.De4+ f5 4.Dh4+ #



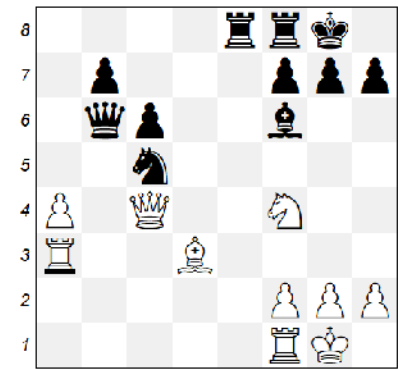
1.Lxh7+ Kxh7 2.Sg5+ Kg6 3.Dg4 f5 4.Dh4 f4 5.Dh7+ Kxg5 6.h4+ Kg4 7.f3#



1...Lxh2+ 2.Kxh2 Th6+ 3.Kg1 Sg3 nebst ...Th1#



1.Sf6+ gxf6 2.Lxh7+ Kxh7 3.Dh5+ Kg8 4.Lxf6 Sg6 5.Dh6 nebst Dg7#



1.Lxh7+ Kxh7 2.Th3+ Kg8 3.Sg6 nebst Th8#