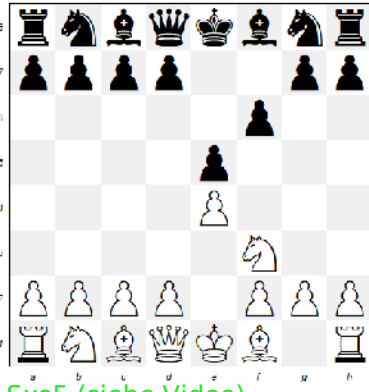
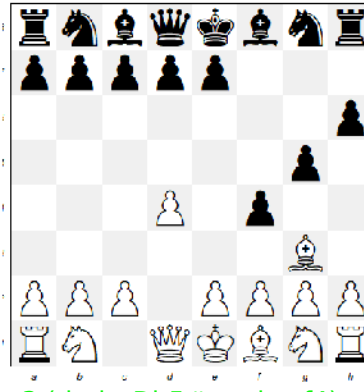




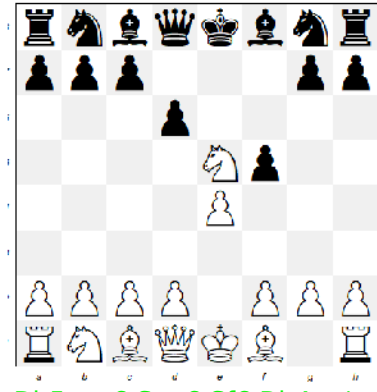
Todesdiagonale



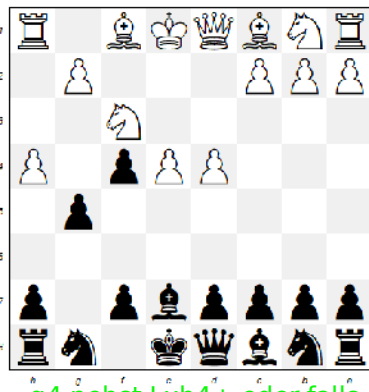
Sxe5 (siehe Video)



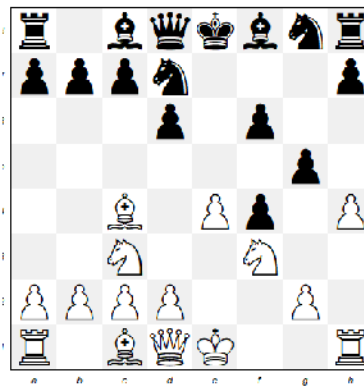
e3 (droht Dh5# und exf4)



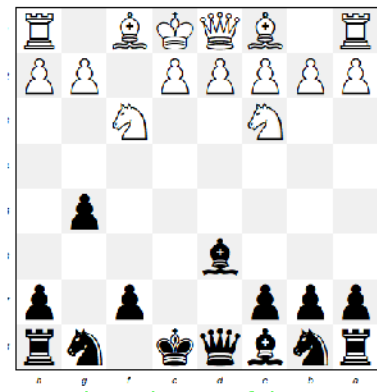
Dh5+ g6 Sxg6 Sf6 Dh4 +/-



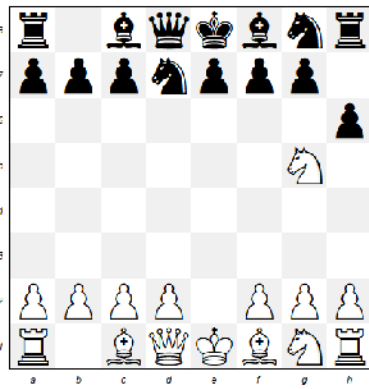
...g4 nebst Lxh4+ oder falls Sg5 dann Lxg5 hxg5 Dxg5-/+



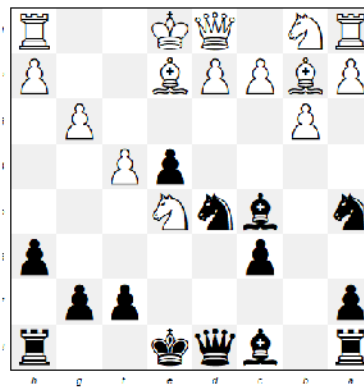
Sxg5 fxg5 Dh5+ Ke7 Df7#



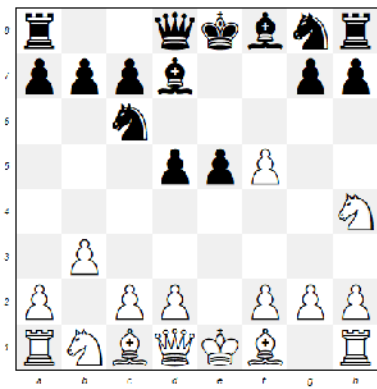
g4 nebst Dh4+ gefolgt von D/Lxg3 und Matt



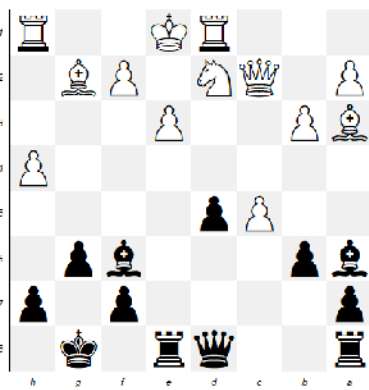
Se6 fxe6 Dh5+ g6 Dxg6#



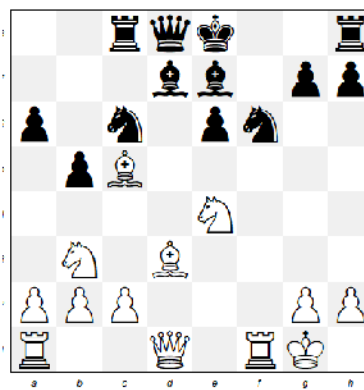
Sxf4 -/+ (falls gxh4 dann Dh4+ Kf1 Df2#)



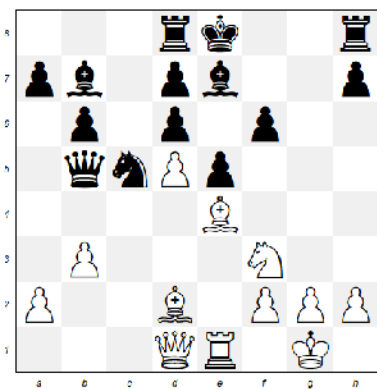
Dh5+ g6 fxg6 +/- (falls Sf6 dann g7+ Sxh5 gxh8D +/-)



...Txe3+ fxe3 Lxh4 Txh4 Dxh4#



Sxf6+ Lxf6 Dh5+ g6 Dxg6 hxg6 Lxg6# oder Sxf6+ gxh6 Dh5+ Kf8 Txf6 nebst #



Sd4 exd4 Dh5+ Kf8 Lh6+ Kg8 Dg4+ Kf7 Dg7+ Ke8 Lg6+ hxg6 Dxg6#