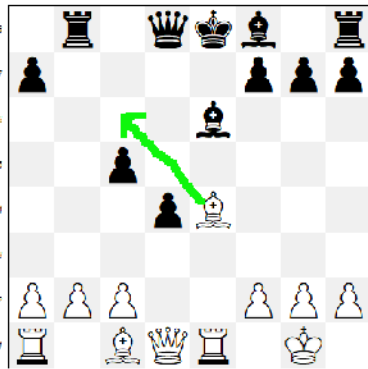


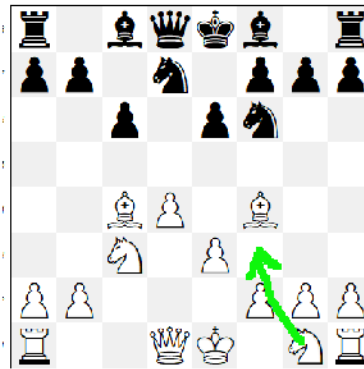


Goldene Regeln

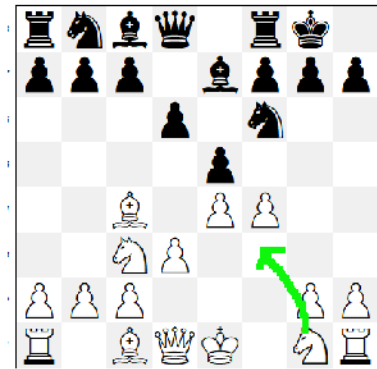
Wende die goldenen Regeln an und versuche den Gegner an seinen Plänen zu hindern!



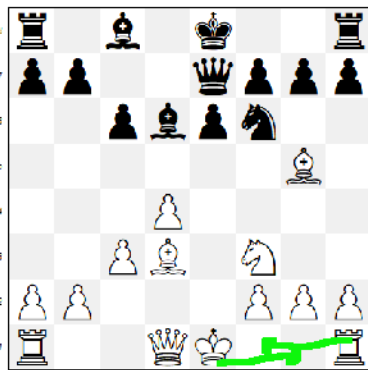
Rochade verhindern



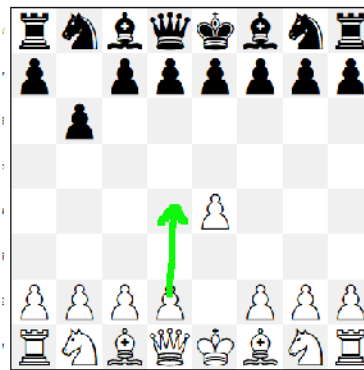
Entwicklung



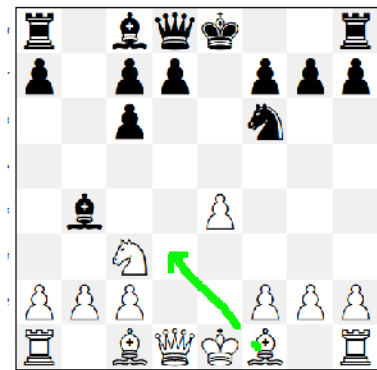
Entwicklung



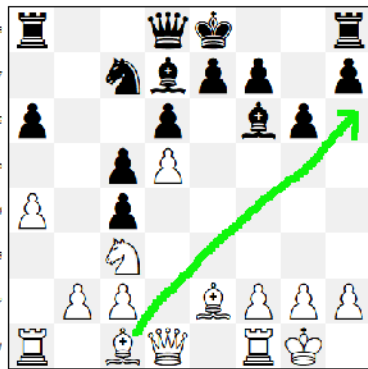
König in Sicherheit bringen / Entwicklung



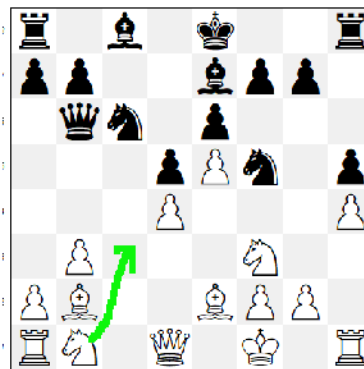
Zentrum besetzen



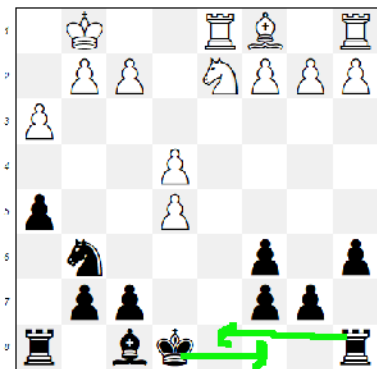
Entwicklung



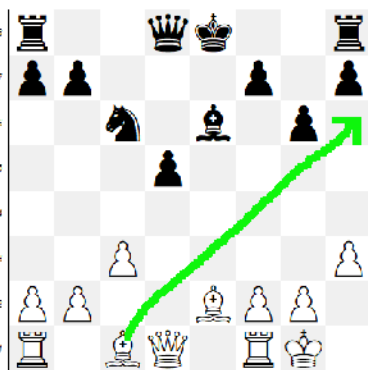
Rochade verhindern



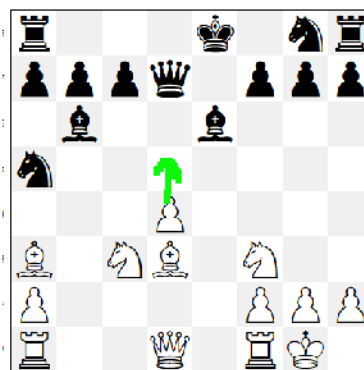
Entwicklung (...Sxd4? Sa4
nebst Sxd4 Sxd4 Lxd4 +-)



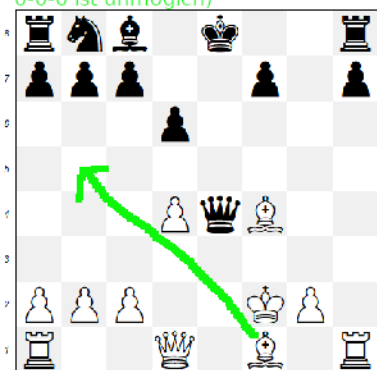
Entwicklung & Königssicherheit
(nicht ...Sxe5 wegen Sb3 und
0-0-0 ist unmöglich)



Rochade verhindern



d5 Lxd5 Sxd5 Dxd5 Te1+
+- mit starkem Angriff



Lb5+ c6 Te1 +-
Lb5+ Kf8 Lh6+ Kg8 Th5+-